

**MINOT AREA**

**GEOLOGIC FIELD TRIPS**

**for**

**Physical Geology Classes**

**prepared by:**

**Dr. Eric Clausen**  
**Department of Earth Science**  
**Minot State University**

# **MINOT AREA**

## **GEOLOGIC FIELD TRIPS**

**for**  
**Physical Geology Classes**

**prepared by:**  
**Dr. Eric Clausen**  
**Department of Earth Science**  
**Minot State University**

### **Table of Contents:**

<b>Physiography of the Souris River Valley</b>	<b>pages 2 - 11</b>
<b>Trip to Lake Sakakawea</b>	<b>pages 12 - 16</b>

**Mileage**

0.0

Corner of Broadway and 11th Avenue Northwest. Proceed east on 11th Avenue.

To the southwest of the corner is the campus of Minot State University. Minot State is a comprehensive regional university serving northwest North Dakota. Enrollment is 3650. The University is organized into a College of Arts and Sciences, a College of Business, a College of Education and Human Services, a College of Nursing, and a Graduate School. The institution offers a bachelors degree program in Earth Science and a minor in Geography. The Earth Science faculty maintains a map library on the third floor of Cyril Moore Hall. The map library houses approximately 60,000 topographic and geologic maps covering all areas of the world. The map library will be moved to a new library building which is in the final design stages (construction is expected to begin next Spring).

0.3

Turn right on 3rd Street, NE. Head south to Burdick Expressway. Trinity Nursing Homes on left at 8th Street, NE (note the pedestrian walkway connecting buildings on both sides of the street). 8th Street is slated to be closed next Spring so Trinity can build across it. The closure of this street was a hotly contested issue in Minot. The issue was resolved by a special city election. Trinity won the right to close the street with a 44 vote margin (out of 7000 votes cast).

After passing the Nursing Home we will cross the Souris River floodplain. This entire neighborhood was under water for nearly 4 weeks during the 1969 flood. During that flood nearly 15,000 people were forced from their homes. Water stood on the floodplain in Minot for weeks. Months were required to repair homes before the city would permit utilities to be turned on. Many residents were out of their homes for six months or more. Minot has a 1% sales tax to help pay for flood control work --including a contribution towards the cost of the Rafferty and Alameda Dams in Saskatchewan.

Cross viaduct over Souris River and Burlington Northern Railroad mainline. To right is the now vacant site of the former Minot roundhouse and related facilities. Most railroad activities other than a crew office have been eliminated at Minot. As a result Minot area railroad employment has dropped from nearly two thousand to a few hundred. Today a small modern building houses the crew office. All other buildings have been removed.

Cross Soo Line Railroad tracks. The Soo Line is owned by Canadian Pacific. The line we are crossing connects with the Canadian Pacific Railroad at Portal, North Dakota. We will follow this line to Velva.

Continue south past the Ward County Courthouse on the left. Turn left on Burdick Expressway by St. Joseph Hospital. To right is the 14-story Milton Young Towers --a senior citizens housing unit.

1.7

Turn right on Valley Street

2.3

Minot City limits

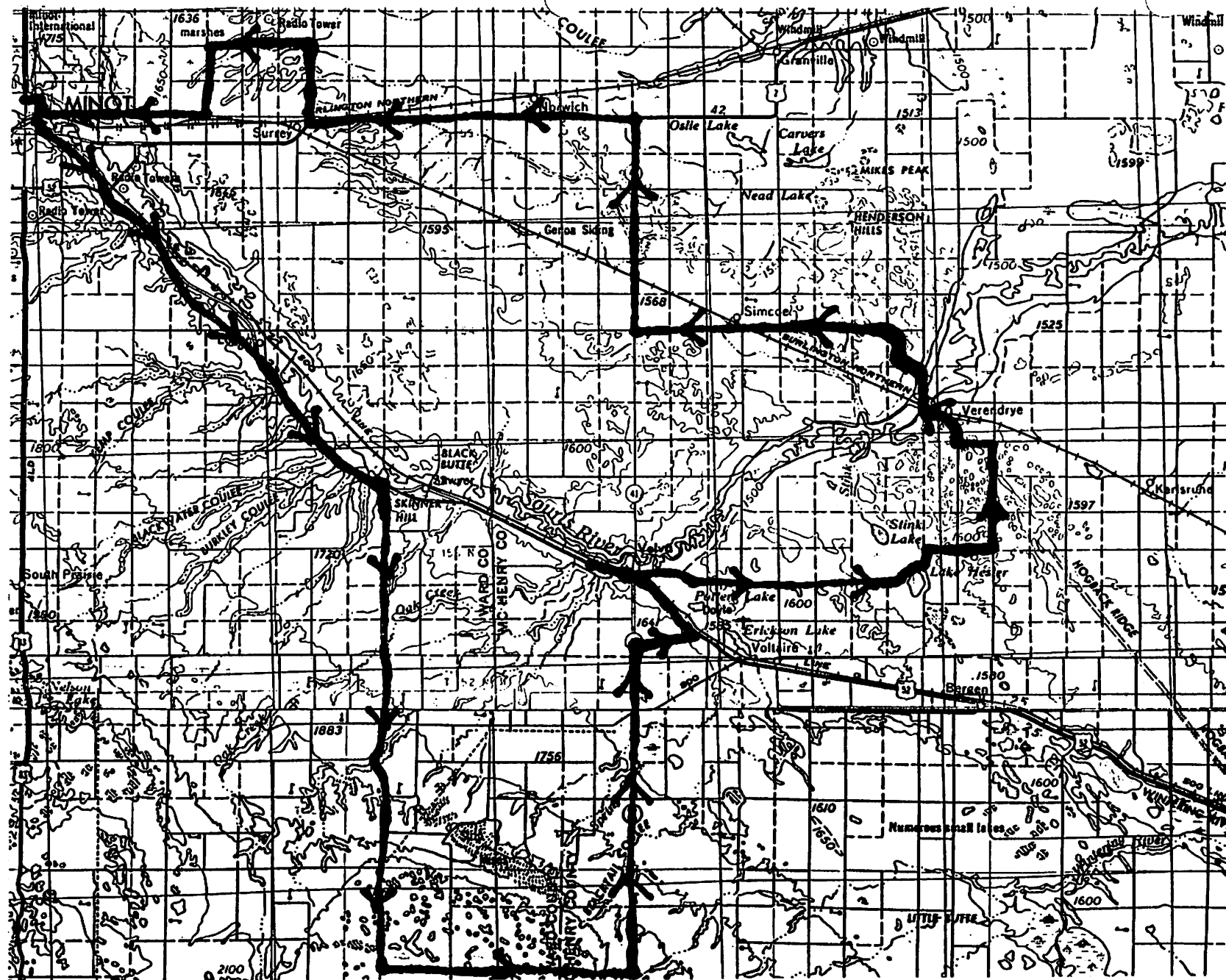


Figure 1: Trip route. Base maps are Minot and McClusky 1:250,000 topographic sheets.

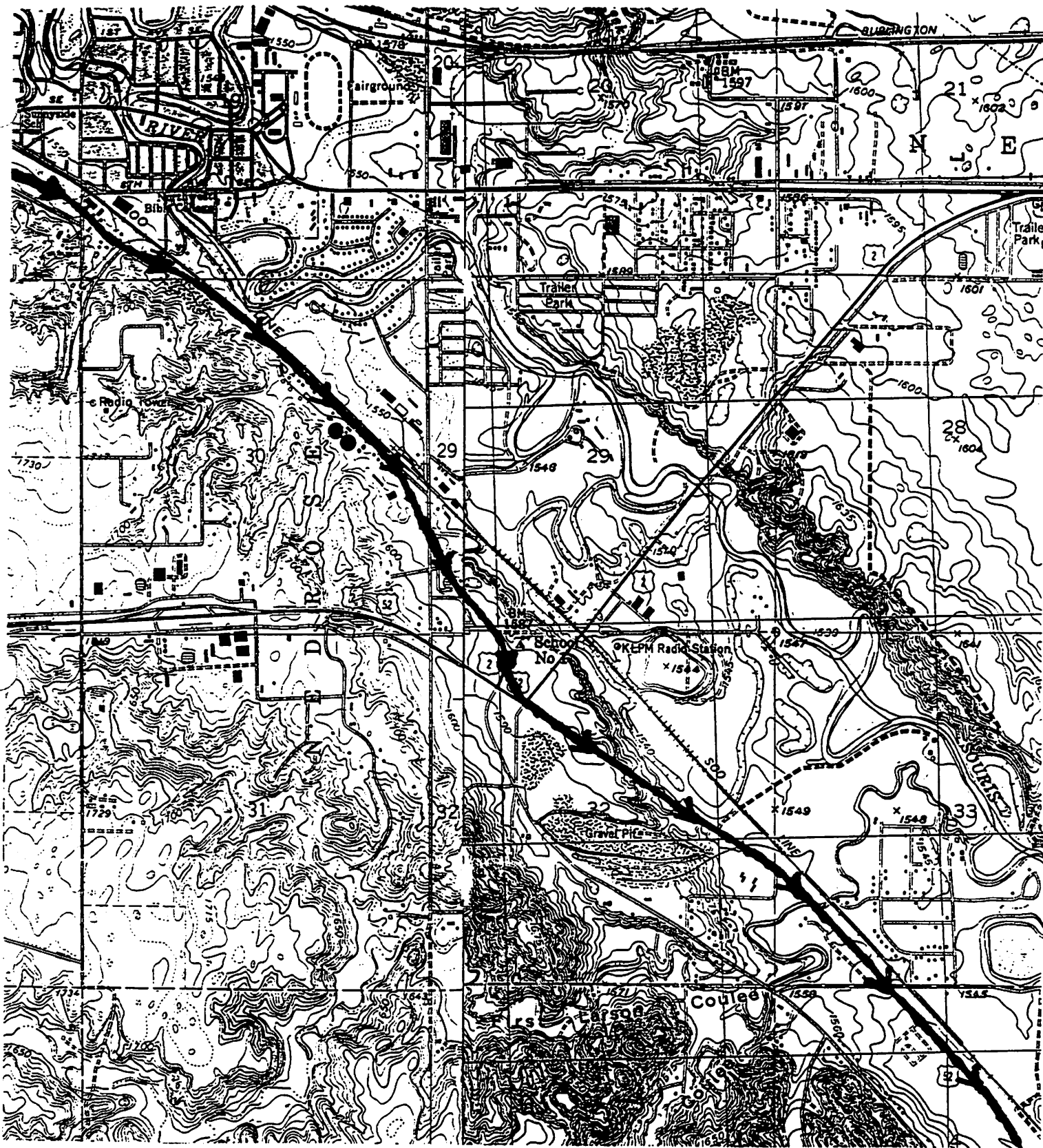


Figure 2: Trip route immediately south and east of Minot. Base maps are Minot and Surrey 7.5 minute topographic sheets.